



LED TECHNOLOGY

Ultra Slim "SMART LEDBOX.."

Single and double sided options are available. The specially treated acrylic in the middle provides a homogenous lighting. Slim box depth 19 mm with 25 mm snap front loaded snap Frame. All aluminium structure is silver anodised. Offers a built in on/off switch. LED illumination save up to 60% energy costs (compared to fluorescent technology) with an increased life expectancy.

Our high quality attractive and functional illuminated LED boxes with high efficiency carbon reducing LED to traditionally lit light boxes using fluorescent lamps are available from A4 up to A0 off the shelf and custom sizes are made to order.

The LED box's lightweight, slim profile design and low voltage requirements allow it to be mounted anywhere there's access to a regular electrical outlet, and the unique frame extrusion offers a wide range of mounting or hanging options.

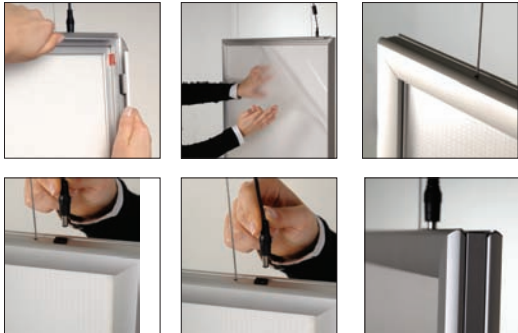
The Ultra Slim LED Box is extremely durable - it contains no fragile tubes or bulbs, and no glass, making it an ideal choice for busy, high-traffic locations.

These LED light panels are an ideal choice for a wide range of indoor applications including retail point-of-purchase, tradeshow displays, menu boards, movie theaters, sports facilities, shopping malls, casinos, and more.



Double Sided

The specially treated acrylic in the middle provides a homogenous lighting. Double Sided Smart LEDBOXES are 27,5 mm in thickness. Offers a built in on/off switch. These LED light panels are an ideal choice for a wide range of indoor applications.



All units pass CE/UL PAT test and comes along with Quality Certificates.

LED illumination save up to 60% energy costs (compared to flourescent technology) with an increased life expectancy.

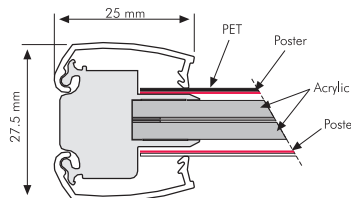
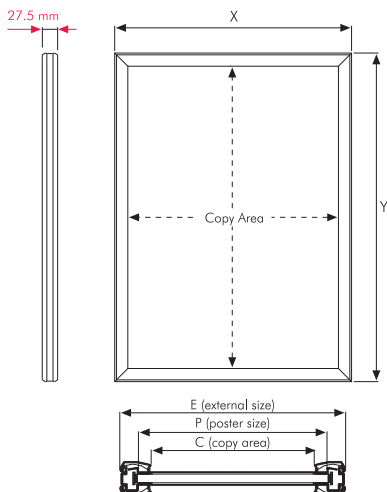
The SMART LED BOX's lightweight, slim profile design and low voltage requirements allow it to be mounted anywhere there's access to a regular electrical outlet, and the unique frame extrusion offers a wide range of mounting or hanging options.

NEW

LED TECHNOLOGY



- Improved Led technology for improved luminance.
- Pre-treated light guided panel diffuses light even & powerful.
- CE listed electrical components.
- 27,5 mm, thinnest lightbox we ever sell.
- Offers evenly diffused lux in all sizes.
- Snap - open frame for easy poster change.
- Saves up to 60% energy gost.



MATERIAL : Silver anodised aluminium PROFILE: 25 MM					WEIGHT	PACKING SIZE
ARTICLE	EXTERNAL (x-y)	POSTER	COPY	LIGHTING	WITH PACKING	*W X H X D
ULD25CN0A4	242 X 329 mm	297 X 420 mm	190 X 277 mm	2000-2200 W	1,600 kg	260 X 420 X 46 mm
ULD25CN0A3	329 X 452 mm	420 X 594 mm	277 X 400 mm	2000-2200 W	2,490 kg	350 X 540 X 46 mm
ULD25CN0A2	452 X 626 mm	594 X 841 mm	400 X 574 mm	2000-2200 W	4,220 kg	470 X 720 X 46 mm
ULD25CN0A1	626 X 873 mm	841 X 1189 mm	574 X 821 mm	1800-2000 W	8,430 kg	650 X 960 X 46 mm
ULD25CN0B2	532 X 732 mm	500 X 700 mm	480 X 680 mm	2000-2200 W	6,450 kg	560 X 820 X 46 mm
ULD25CN0B1	732 X 1032 mm	700 X 1000 mm	680 X 980 mm	1800-2000 W	11,640 kg	780 X 1100 X 46 mm
ULD25CN023	540 X 794 mm	508 X 762 mm	488 X 742 mm	2000-2200 W	6,900 kg	570 X 870 X 46 mm
ULD25CN034	794 X 1048 mm	762 X 1016 mm	742 X 996 mm	1800-2000 W	12,850 kg	820 X 1120 X 46 mm



* W:Width H: Height D: Depth